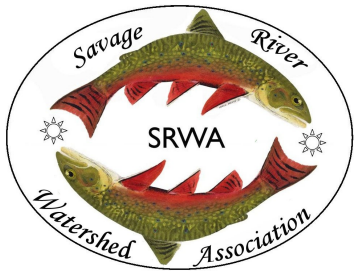


SRWA

Mission Statement

The Savage River Watershed Association (SRWA) is a group of local landowners and other citizens dedicated to preserving and enhancing the rural nature and natural resources of the Savage River watershed by assisting interested landowners and public land managers with environmental stewardship efforts and educational outreach.

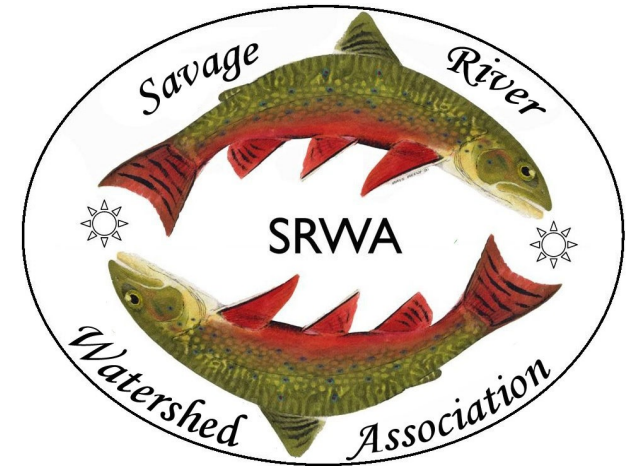


Are you concerned about the Savage River watershed, including the native brook trout pictured above? If so, please join us.

SRWA meetings are generally held on the third Thursday of odd-numbered months at 7 pm at Route 40 Elementary School. The school is located at 17764 National Pike (Route 40) a few miles west of Frostburg in Garrett County, Maryland.

For more information, contact us at 301-689-7156 or SRWAdirector@gmail.com, or visit our web site at www.SavageRiverWatershed.org

Printed on recycled paper.



Savage River Watershed Association

PO Box 355
Frostburg, MD 21532

301-689-7156
SRWAdirector@gmail.com

www.SavageRiverWatershed.org



© Michelle Arrington

Savage River Watershed Association, Inc.
PO Box 355
Frostburg, MD 21532

Membership Form

Name

Address

City State Zip

Phone

Email

Membership category (please check one)

Student \$10

Individual \$25

Family \$35

Supporting \$50

Defending \$100

Additional contribution\$ _____

I can make a difference! I would also like to help SRWA by volunteering my time to work on:

Please make checks payable to:

**Savage River Watershed Association, Inc.
PO Box 355
Frostburg, MD 21532**

*SRWA is a 501(c)(3) non-profit charitable organization,
so your dues are tax deductible.*

Thanks to

*Dave Neely for the use of his brook trout image and
Michelle Katz for her help in creating our logo.*

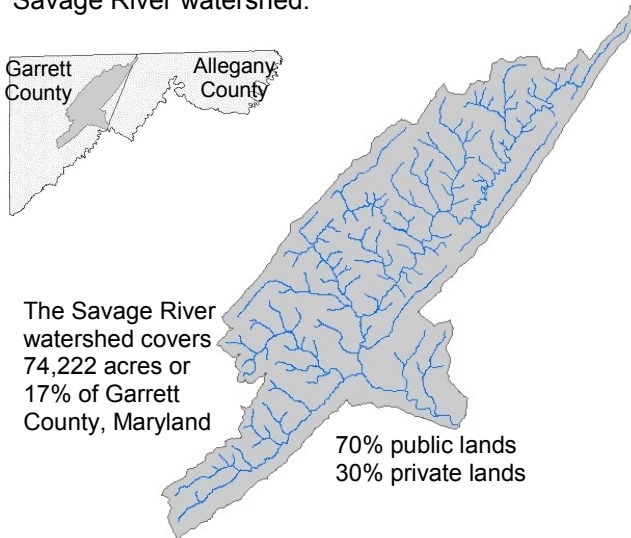
Savage River Watershed Association

Who are we?

We are landowners and citizens who live, work, and/or recreate in Garrett County's Savage River watershed. Though we come from diverse backgrounds we are united by our appreciation for this region. We want to preserve all of its values, especially the quality and quantity of its ground and surface water resources. We identify threats to our watershed, assess the potential effects of these, and generate remediation plans. Through our efforts we hope to preserve and enhance the rural nature and natural resources of the Savage River watershed.

The Savage River is a headwater tributary for the Potomac River and the Chesapeake Bay that includes both coldwater and highland streams. As Maryland's premier brook trout fishery, the Savage River has been identified as a conservation priority because it is one of the few watersheds that still contain intact populations of native brook trout in Maryland. The Savage River Watershed Association (SRWA) was formed in March 2006. We were inspired by efforts to restore water quality in Aaron Run, the only tributary within the watershed impacted by acid mine drainage. We selected the native brook trout (*Salvelinus fontinalis*) for our logo because it is our keystone species. To protect it, we need to preserve all of the values of the Savage River watershed.

Garrett County Allegany County



Values

- Native brook trout
- Surface and groundwater
- Species diversity
- Wildlands and natural areas
- Fish and wildlife habitat
- Recreation and quality of life
- Open space and scenic beauty

Threats

- Deep shale natural gas extraction
- Industrial wind energy development
- Acid rain
- Thermal pollution
- Habitat destruction
- Exotic invasive species
- Acid mine drainage
- Erosion and sediment
- Stormwater runoff
- Loss of farms and forests
- Over-consumption of water

Action Plan

- Assess watershed for impacts
- Monitor water quality of streams
- Control exotic invasive species
- Plant forest buffers along streams
- Repair stream bank erosion
- Provide educational outreach
- Encourage conservation landscaping
- Promote eco-system based management

The Future Depends On You!

- *Become a SRWA member*
- *Volunteer for work projects*
- *Help with fundraising events*
- *Share your time, energy and skills*
- *Make a donation to SRWA*